



# PG36M555

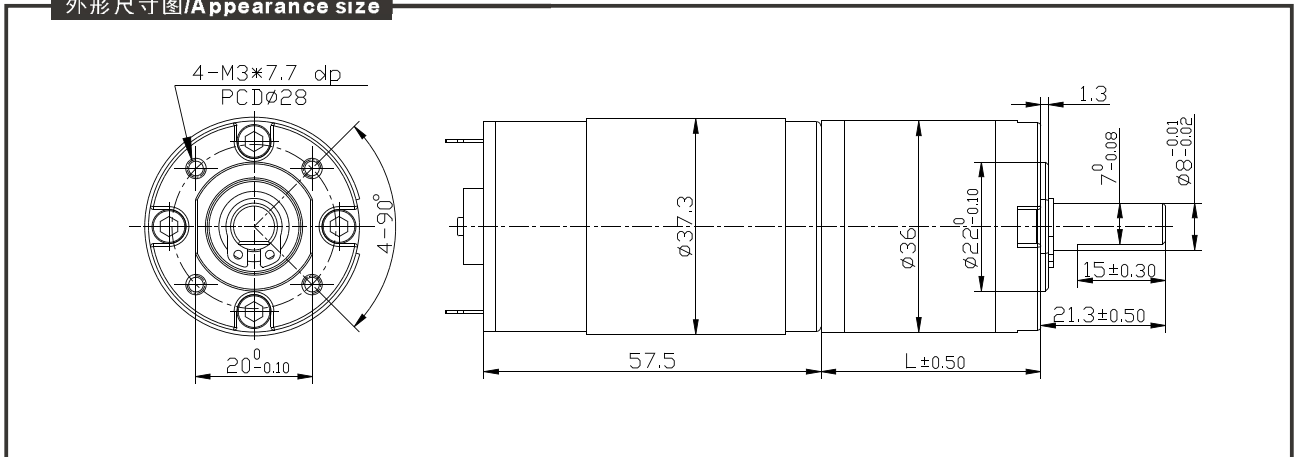


**适用范围/Typical applications:**

遥控窗帘、监控云台/云台、自动售货机/老虎机、验钞机、硬币退币机、点钞机、柔巾机、自动门、覆膜机、自动电视架、办公设备、家用电器。

Auto shutter, Pan/Tilt camera, Slot machine, Money detector, Coin refund devices, Currency count machine, Towel dispensers, Automatic doors, Peritoneal machine, Automatic TV rack, Office equipment, Household appliances, Automatic actuator

外形尺寸图/Appearance size



减速马达力矩和转速/Geard Motor Torque/Speed					
级数 Number of stages	1 stages reduction	2 stages reduction	3 stages reduction	4stages reduction	5stages reduction
减速比Reduction ratio	3.7, 5.2	13.7, 19.2, 26.9	50.9, 71.2, 99.5, 139,	188, 264, 369, 516, 721,	699, 977, 1367, 1911, 2672, 3736,
齿轮箱长度 Gearbox length "L" mm	25.1	32.3	38.5	44.7	50.9
最大额定力矩 Max. Running torque	10Kgf · cm	20Kgf · cm	50Kgf · cm	50Kgf · cm	50Kgf · cm
最大损坏扭力 Max. Gear breaking torque	30Kgf · cm	60Kgf · cm	150Kgf · cm	150Kgf · cm	150Kgf · cm
效率Gearing efficiency	90%	81%	73%	65%	59%

光电机参数/Motor data:									
马达型号 Motor name	额定电压 Rated Volt. V	空载No load		负载扭矩Load torque				堵转扭矩Stall torque	
		Current	Speed	Current	Speed	Torque	Output power	Torque	Current
		mA	r/min	mA	r/min	gf · cm	W	gf · cm	A
RS-555123000	12	≤140	3000	≤600	2458	179	4.51	1210	3.1
RS-555124500	12	≤200	4500	≤900	3929	183	7.42	1508	6.0
RS-555126000	12	≤320	6000	≤1450	5244	215	11.5	1722	9.3
RS-555243500	24	≤115	3500	≤480	3041	246	7.7	1720	2.7
RS-555244500	24	≤110	4500	≤460	3984	189	7.8	1713	3.4
RS-555246000	24	≤140	6000	≤920	5305	243	13.2	2065	5.5
RS-555249500	24	≤280	9500	≤1900	8190	386	32.5	2797	11.7

1、减速后的输出力矩=马达力矩X减速比X齿轮效率。输出转速=马达转速/减速比。  
 1. After connecting motor and gearbox which is named gearmotor the output torque: motor torque X reduction ratio X gearing efficiency; output speed: motor speed / reduction ratio.

**NOTE:**

- 1、马达命名: 如PG36555123000-99.5K。马达参数如马达清单上的RS-555123000, 齿轮减速比参数如齿轮箱清单上的99.5, 马达的输出转速和输出力矩请参照上表的马达清单。
  - 2、马达可安装的译码器参数请参照第48页。
  - 3、标准输出轴为Φ8.0mm, 其它尺寸可根据客户要求制作。
  - 4、以上参数仅作参考, 具体以实物为准。
- 1、Gearmotor named methods: e.g. PG36555123000-99.5K Motor please refer to the motor data RS-555123000. Gearbox please refer to gearbox data reduction ratio 99.5. Related to gearmotor outputs speed and torque please refer to motor data.
  - 2、Motor can be installed with magnetic encoder, encoder parametes please refer to Page 48.
  - 3、Standard output shaft after reducing Φ8.0mm. other sizes of the output shaft can make as client request.
  - 4、Chart only for reference, products shall prevail the entity.